



# 2025 NEW TERM PROGRAMME

## MONDAY

**9 - 3PM**   
1:1 Support in  
Schools/PYCP including  
BWell Together mental  
health support

**1 - 3PM**  
16+ Drop In  
CV and  
Job Hunting 

**2 - 3:30PM**  
Under 12s  
Group Work  
(Closed)

**3:30-5PM**  
Youth  
Committee



**9 - 3PM**  
1:1 Support in  
Schools/PYCP including  
BWell Together mental  
health support

**3:30 - 5PM**  
P5-6  
Club

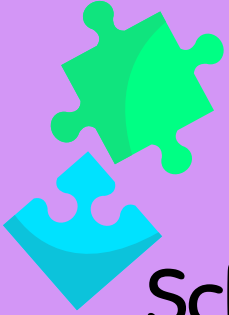


**6 - 7:30PM**  
P7+  
Girls Group



## TUESDAY

## WEDNESDAY

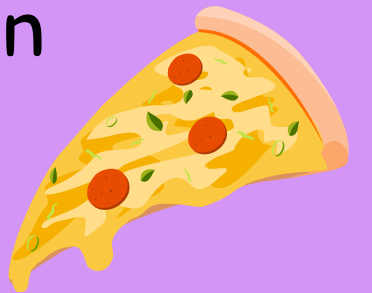


**9 - 3PM**  
1:1 Support in  
Schools/PYCP including  
BWell Together mental  
health support

**10 - 12PM**  
PY  
Community Garden  
Group



**6:30 - 8PM**  
P7+  
Drop In



## FRIDAY



**2 - 3:30PM**  
P1-2  
Fun Club




**3:45 - 5:15PM**  
P3-4  
Fun Club



**6:30 - 8PM**  
P7+  
Drop In



## THURSDAY

**9 - 3PM**   
1:1 Support in  
Schools/PYCP including  
BWell Together mental  
health support

**10 - 11:30am**  
Brekkie & Blether  
Parents Group  
(Closed)



**2 - 3PM**  
S1+  
Boys Group  
(Closed)

**3-4PM**   
16-25  
Feel Good Futures  
Drop In

 0131 332 9815  
 [info@pycp.co.uk](mailto:info@pycp.co.uk)  
 [www.pycp.co.uk](http://www.pycp.co.uk)



**WEEKENDS**  
**10 - 4PM**  
0-12 year old Birthday Parties

