

Summer 2012

fun clubs

potanics

The Quest

Gorge Walking

swimming

Gambados

Olympics Triathalon

snow centre

Fringe Events

teddy bear's picnic

**PY&CP** children's  
Milton South Project 

# Pilton Youth & Children's Project

The Greenhouse

West Pilton Brae

Edinburgh EH4 4DG

Web: [www.pycp.co.uk](http://www.pycp.co.uk)

Email us [summer@pycp.co.uk](mailto:summer@pycp.co.uk)

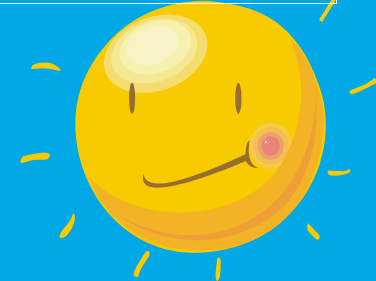
Phone us 0131 332 9815

- 1. Spaces for trips are limited and priority will be given to existing service users.*
- 2. Your child **must** have a current consent form before they sign up for activities.*
- 3. In choosing activities, please go by the school year you have just left (with the exception of new intake P1's as long as they are aged 5)*
- 4. Sign up day is Friday 6th July from 10.00am to 3.00pm*

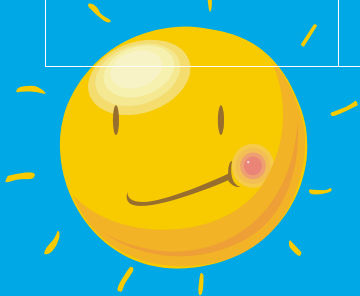
<p><b>Monday</b> <b>9th July</b></p>	<p style="text-align: center;">            Sorry no clubs or groups today             </p>		
<p><b>Tuesday</b> <b>10th July</b></p>	<p style="text-align: center;"> <b>11.00 am - 12.30 pm</b>  <b>Drop Ins (age 5 - 18)</b>            (Sign up in groups of 10 for 30 min slots)         </p>	<p style="text-align: center;"> <b>1.00 pm - 2.30 pm</b>  <b>Drop Ins (age 5 - 18)</b>            (Sign up in groups of 10 for 30 min slots)         </p>	
<p><b>Wednesday</b> <b>11th July</b></p>	<p style="text-align: center;"> <b>12.30 pm - 1.30 pm</b>  <b>P1 - P4</b>  <b>Fun Club</b> </p>	<p style="text-align: center;"> <b>1.45 pm- 2.45 pm</b>  <b>P5 - P7</b>  <b>Fun Club</b> </p>	<p style="text-align: center;"> <b>1.00 pm - 3.30 pm</b>  <b>P7 Transition Groups</b>  <b>Cycling</b>  <i>(Meet at PYCP -closed group)</i> </p>
<p><b>Thursday</b> <b>12th July</b></p>	<p style="text-align: center;"> <b>11.00 am - 12.30 pm</b>  <b>Drop Ins (age 5 - 18)</b>            (Sign up in groups of 10 for 30 min slots)         </p>	<p style="text-align: center;"> <b>1.00 pm - 2.30 pm</b>  <b>Drop Ins (age 5 - 18)</b>            (Sign up in groups of 10 for 30 min slots)         </p>	
<p><b>Friday</b> <b>13th July</b></p>	<p style="text-align: center;">             Sorry no clubs or groups today             </p>		



# Week 1



<p><b>Monday</b> <b>16th July</b></p>	<p>11.00 am - 12.30 pm  Drop Ins (age 5 - 18) (Sign up in groups of 10 for 30 min slots)</p>	<p>1.00 pm - 2.30 pm  Drop Ins (age 5 - 18) (Sign up in groups of 10 for 30 min slots)</p>	
<p><b>Tuesday</b> <b>17th July</b></p>	<p>11.00 am - 12.30 pm Art Workshop P1 - P4 </p>	<p>1.30-3.00pm Art Workshop P5 - P7 </p>	
<p><b>Wednesday</b> <b>18th July</b></p>	<p>12.00 noon - 1.30 pm P1 - P4 Movie Club </p>	<p>2.00 pm- 3.30 pm P5 - P7 Movie Club </p>	<p>4.00 pm - 5.00 pm Transition Group Get Together <b>(closed group)</b> 6.00-7.30pm Wednesday Drop In P7 - Age 18</p>
<p><b>Thursday</b> <b>19th July</b></p>	<p> 1.30 pm - 3.30 pm Girl's Pyjama Party Afternoon In P7 + </p>		
<p><b>Friday</b> <b>20th July</b></p>	<p>1.30 pm - 3.00 pm Art Workshop P7 - Age 18</p>	<p>6.00 - 8.00 pm Big Summer Pitch Invasion P7 + at Spartans Community Football Academy</p>	



# Week 2



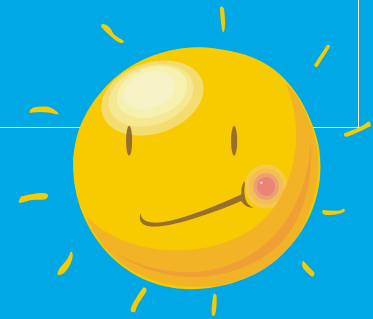
<p><b>Monday</b> <b>23rd July</b></p>		<p>1.00 pm - 4.00 pm Botanic Gardens Trip - P3 - P5 (12 spaces)</p>	
<p><b>Tuesday</b> <b>24th July</b></p>	<p>1.00 pm - 5.00 pm SNOWBOARDING in the SUMMER! S1+ (8 spaces)</p>		
<p><b>Wednesday</b> <b>25th July</b></p> 	<p>1.00pm - 3.00pm P7 Transition Group Swimming @ CCHS <b>(Meet at PYCP -closed group)</b></p>	<p>1.00 - 4.00 pm Castle Rock Edinvar West Pilton Community Games @ PYCP (All community Welcome)</p>	<p>6.00 - 7.30 pm Wednesday Drop In P7 - Age 18</p>
<p><b>Thursday</b> <b>26th July</b></p>		<p>12 noon - 3.00 pm Teddy Bear's Picnic @ Lauriston Castle</p>	
<p><b>Friday</b> <b>27th July</b></p>	<p>11.00 am - 7.00 pm !!!The Quest !!! Area wide scavenger hunt! S1+ (sign up in teams)</p>		



**Week 3**

<p><b>Monday</b> <b>30th July</b></p>		<p>1.00 pm - 5.00 pm Deep Sea World Trip P1- P4 ( 10 spaces)</p>	
<p><b>Tuesday</b> <b>31st July</b></p>	<p>12.00 noon - 4.30 pm Barbecue at Gullane Beach 15+ (12 spaces)</p>	<p>4.00 - 5.00pm Transition Group Get Together <b>(closed group)</b> 6.00 pm - 7.30 pm Wednesday Drop In P7 - Age 18</p>	
<p><b>Wednesday</b> <b>1st August</b></p>	<p>12.30 pm - 1.30 pm P1 - P4 Fun Club</p>	<p>1.45 pm- 2.45 pm P5 - P7 Fun Club</p>	<p>10.30 am - 4.00 pm Blair Drummond Safari Park P5-P7 (10 spaces)</p>
<p><b>Thursday</b> <b>2nd August</b></p>	<p>1.30 pm - 5.00 pm Trip to Gambados (Soft Play Centre) P1 - P4 (24 spaces)</p>		<p>1.00 pm - 3.30 pm Laser Quest Trip S1+ (12 spaces)</p>
<p><b>Friday</b> <b>3rd August</b></p>		<p>1.30 pm - 5.00 pm Trip to Gambados (Soft Play Centre) P1 - P4 (24 spaces)</p>	

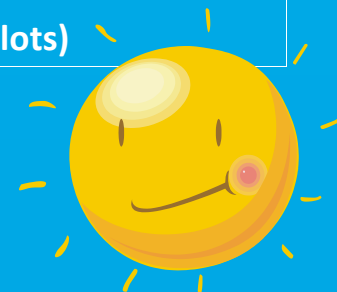
**Week 4**



<p><b>Monday</b> <b>6th August</b></p>	<p>11.00 am - 2.30 pm Fringe Festival Trip "The Amazing Bubble Show" P1 - P7 (10 spaces)</p>	<p>1.00 pm - 3.00 pm Triathlon Part I - Swim P5-S3 (12 spaces )</p> 	
<p><b>Tuesday</b> <b>7th August</b></p>	<p>1.00 pm - 3.00 pm Triathlon Part 2 - Bike P5 - S3 (12 spaces)</p>	<p>3.00 pm - 6.30 pm Fringe Festival Trip "Hi-Kick" Dance and Football Show! S1 + (12 spaces)</p>	
<p><b>Wednesday</b> <b>8th August</b></p>	<p>1.00pm - 5.00 pm P7 Transition Group Gorge Walking <b>(Meet at PYCP -closed group)</b></p>	<p>1.00 pm - 3.00 pm Triathlon Part 3 - Run P5 - S3 (12 spaces)</p>	<p>6.00 pm - 7.30 pm Wednesday Drop In P7 - Age 18</p>
<p><b>Thursday</b> <b>9th August</b></p>			<p>12.00 midday - 2.00 pm Face Painting Lunch Club (P1 - P4)</p>
<p><b>Friday</b> <b>10th August</b></p>	<p>11.00 am - 12.30 pm Drop Ins (age 5 - 18) (Sign up in groups of 10 for 30 min slots)</p>	<p>1.00 pm - 2.30 pm Drop Ins (age 5 - 18) (Sign up in groups of 10 for 30 min slots)</p>	



**Week 5**



# July 2012

Mon	Tue	Wed	Thu	Fri	Sat	Sun
						1
2	3	4	5	6	7	8
9	10	11	12	13	14	15
16	17	18	19	20	21	22
23	24	25	26	27	28	29
30	31					

**PY CLUBS AND GROUPS**

# August 2012

Mon	Tue	Wed	Thu	Fri	Sat	Sun
		1	2	3	4	5
6	7	8	9	10	11	12
13	14	15	16	17	18	19
20	21	22	23	24	25	26
27	28	29	30	31		

**BACK TO SCHOOL**

