



PYCP Summer Programme

WEEK 1

The Greenhouse, 33 West Pilton Brae, EH44BH
T: 01313329815 E: info@pycp.co.uk W: www.pycp.co.uk

MON 3RD JULY

10.30 - 12 noon P1-4 Monday
Fun Day

12 - 1.00pm PY Dinners

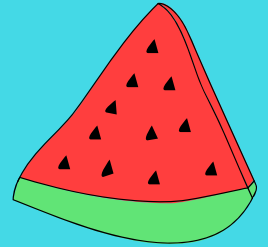
1.00 - 2.30pm P5-7 Monday
Fun Day



TUE 4TH JULY

12 - 1.00pm PY Dinners

1.00 - 2.30pm Forthview
Primary Transition Group Get
Together (closed group)



WED 5TH JULY

11.00 - 1.30pm P1-4 Picnic to
Lauriston Castle (15 spaces)

12 - 1.00pm PY Dinners

1.00 - 3.30pm P5-7 Treasure
Hunt at Forthquarter Park (15
spaces)

6.00 - 7.30pm S1+ Drop In

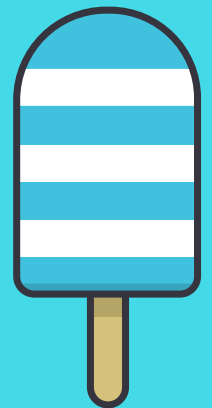


THU 6TH JULY

11.00 - 3.00pm S1+ Trip to Ten
Pin Bowling @ Fountainpark
(10 spaces)

12- 1.00pm PY Dinners

1.00-2.00pm Drop In (all ages)



FRI 7TH JULY

10.30 - 12.30pm P1-4 Movie
Morning

1.00 - 3.00pm P5-7
Movie Afternoon

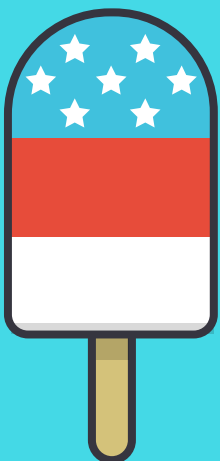
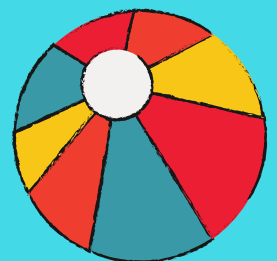
6.30 - 8.30pm Hub S1+



@piltonyouthproj



PYCP/97



- We are providing free, healthy meals Monday to Thursday , just drop in!
- When signing up to trips and activities, please go by the year you have just left with the exception of new P1's as long as they are 5.
- You must have an up to date consent form to take part in ANY activities.
- Places on trips are not guaranteed but we try to be fair when allocating places.
- We will be also be running closed groups for our Intensive Support and employability services.



PYCP Summer Programme

WEEK 2

The Greenhouse, 33 West Pilton Brae, EH44BH
T: 01313329815 E: info@pycp.co.uk W: www.pycp.co.uk

MON
10TH JULY

10.30 - 12 noon P1-4 Monday
Fun Day

12 - 1.00pm PY Dinners

1.00 - 2.30pm P5-7 Monday
Fun Day



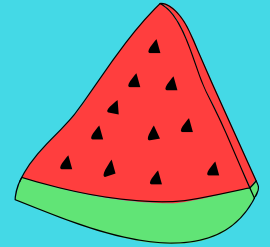
TUE 11TH
JULY

10.30 - 12 noon PY Tennis P1-4

12 - 1.00pm PY Dinners

1.30 - 3.30pm Junior Tennis Trip
P5-7 (10 YP)

2.00 - 4.00pm Girls Afternoon
S1+



WED 12TH
JULY

12 - 1.00pm PY Dinners

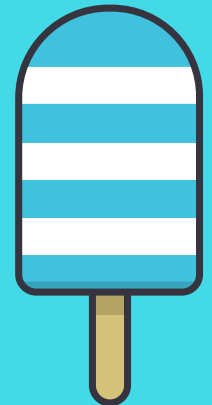
6.00 - 7.30pm S1+ Drop In



THU 13TH
JULY

12- 1.00pm PY Dinners

1.00 - 4.00pm - P1-7 Trip to
Wonderworld Soft Play (15
spaces)

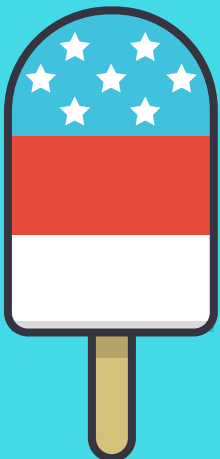


FRI 14TH
JULY

10.30 - 12 noon P1 -4 Art Club

1.00 - 2.30pm P5 - 7 Art
Club

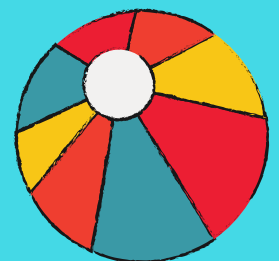
6.30 - 8.30pm Hub S1+



@piltonyouthproj



PYCP/97



- We are providing free, healthy meals Monday to Thursday , just drop in!
- When signing up to trips and activities, please go by the year you have just left with the exception of new P1's as long as they are 5.
- You must have an up to date consent form to take part in ANY activities.
- Places on trips are not guaranteed but we try to be fair when allocating places.
- We will also be running closed groups for our Intensive Support and employability services.



PYCP Summer Programme

WEEK 3

The Greenhouse, 33 West Pilton Brae, EH44BH
T: 0133329815 E: info@pycp.co.uk W: www.pycp.co.uk

MON 17TH
JULY

10.30 - 12 noon P1-4 Monday
Fun Day

12 - 1.00pm PY Dinners

1.00 - 2.30pm P5-7 Monday
Fun Day



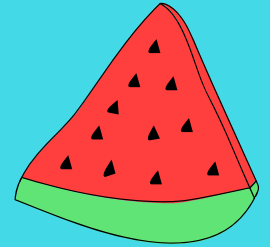
TUE 18TH
JULY

10.00 - 4.00pm Bus Run to
secret destination,
with MYDC, S1+, (spaces TBC)

10.30 - 12 PY Tennis P1-4

12 noon - 1.00pm PY Dinners

1.30 - 3.30pm Junior Tennis Trip
P5-7 (10 YP)



WED 19TH
JULY

12 - 1.00pm PY Dinners

1.00 - 4.30pm cinema @
Ocean Terminal - P1-4 (10
spaces)

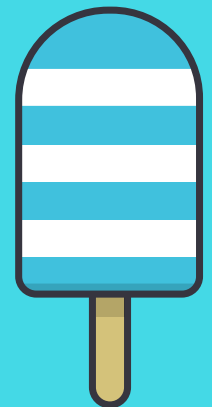
6.00 - 7.30pm S1+ Drop In



THU 20TH
JULY

12- 1.00pm PY Dinners

1.00 - 4.00pm P5-S4 Trip To
Boardwalk/ Transgression Park
@ Ocean Terminal (10 spaces)

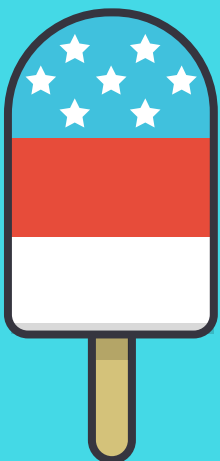


FRI 21ST
JULY

10.30-12 noon P1-4 Multi
sports

1.00-2.30pm P5-7 Multi
sports

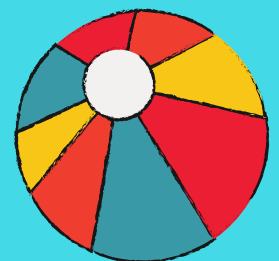
6.30 - 8.30pm Hub S1+



@piltonyouthproj



PYCP/97



- We are providing free, healthy meals Monday to Thursday , just drop in!
- When signing up to trips and activities, please go by the year you have just left with the exception of new P1's as long as they are 5.
- You must have an up to date consent form to take part in ANY activities.
- Places on trips are not guaranteed but we try to be fair when allocating places.
- We will also be running closed groups for our Intensive Support and employability services.



PYCP Summer Programme

WEEK 4

The Greenhouse, 33 West Pilton Brae, EH44BH
T: 01313329815 E: info@pycp.co.uk W: www.pycp.co.uk

**MON 24TH
JULY**

10.30 - 12 noon P1-4 Monday
Fun Day

12 - 1.00pm PY Dinners

1.00 - 2.30pm P5-7 Monday
Fun Day



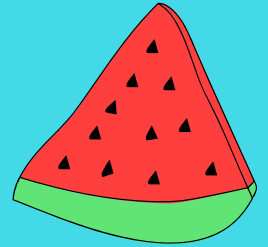
**TUE 25TH
JULY**

10.00 - 4.00pm Bus Run to
secret destination, with
MYDG, S1+, (spaces TBC)

10.30 - 12 noon PY Tennis P1-4

12 - 1.00pm PY Dinners

1.30 - 3.30pm Junior Tennis Trip
P5-7 (10 YP)



**WED 26TH
JULY**

12.00 - 4.00pm P5-7 Trip to
Camera Obscura (10 spaces)

12 - 1.00pm PY Dinners

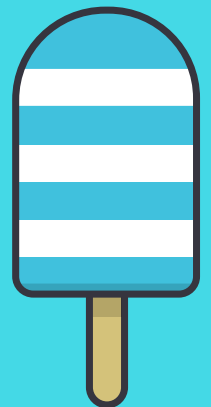
6.00 - 7.30pm S1+ Drop In



**THU 27TH
JULY**

10.30 - 2.30pm P1-4 Trip to
Museum and Meadows Play
park/ picnic (10 spaces)

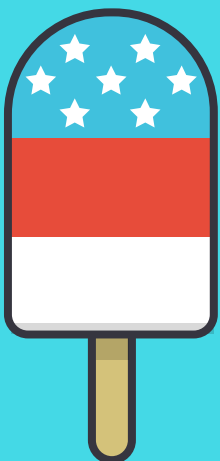
12- 1.00pm PY Dinners



**FRI 28TH
JULY**

The Quest! - all day event,
S1+ (2 teams)

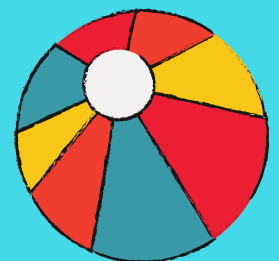
6.30 - 8.30pm Hub S1+



@piltonyouthproj



PYCP/97



- We are providing free, healthy meals Monday to Thursday , just drop in!
- When signing up to trips and activities, please go by the year you have just left with the exception of new P1's as long as they are 5.
- You must have an up to date consent form to take part in ANY activities.
- Places on trips are not guaranteed but we try to be fair when allocating places.
- We will also be running closed groups for our Intensive Support and employability services.



PYCP Summer Programme

WEEK 5

The Greenhouse, 33 West Pilton Brae, EH44BH
T: 01313329815 E: info@pycp.co.uk W: www.pycp.co.uk

MON 31ST JULY

10.30 - 12 noon P1-4 Monday Fun Day

12 - 1.00pm PY Dinners

1.00 - 2.30pm P5-7 Monday Fun Day



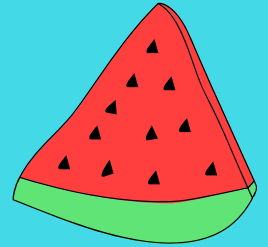
TUE 1ST AUGUST

10.00 - 4.00pm Bus Run to secret destination, with MYDC, S1+, (spaces TBC)

10.30 - 12 noon PY Tennis P1-4

12 - 1.00pm PY Dinners

1.30 - 3.30pm Junior Tennis Trip P5-7 (10 YP)



WED 2ND AUGUST

11.30 - 5.00pm P1-4 Trip to the Zoo (10 spaces)

12 - 1.00pm PY Dinners

6.00 - 7.30pm S1+ Drop In

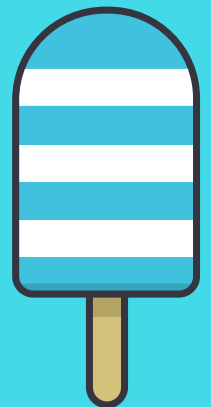


THU 3RD AUGUST

1.00-3.00pm Drop In and visit to West Pilton Neighbourhood Centre BBQ P5+ (20 spaces)

12- 1.00pm PY Dinners

1.00-4.30pm S1+ Cinema Trip (10 spaces)

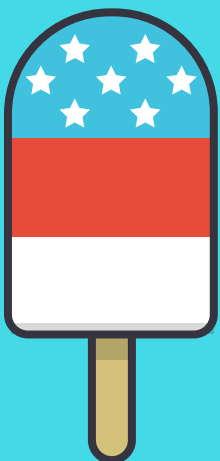


FRI 4TH AUGUST

10.30-12 noon P1-4 Art Club

1.00-2.30pm P5-7 Art Club

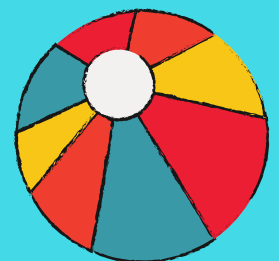
6.30 - 8.30pm Hub S1+



@piltonyouthproj



PYCP/97



- We are providing free, healthy meals Monday to Thursday , just drop in!
- When signing up to trips and activities, please go by the year you have just left with the exception of new P1's as long as they are 5.
- You must have an up to date consent form to take part in ANY activities.
- Places on trips are not guaranteed but we try to be fair when allocating places.
- We will also be running closed groups for our Intensive Support and employability services.



PYCP Summer Programme

WEEK 6

The Greenhouse, 33 West Pilton Brae, EH44BH
T: 01313329815 E: info@pycp.co.uk W: www.pycp.co.uk

MON 7TH
AUGUST

10.30 - 12 noon P1-4 Monday
Fun Day

12 - 1.00pm PY Dinners

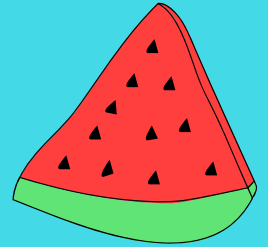
1.00 - 2.30pm P5-7 Monday
Fun Day



TUE
8TH AUGUST

10.00 - 4.00pm Bus Run to
secret destination, with MYDG,
S1+, (spaces TBC)

12 - 1.00pm PY Dinners



WED
9TH AUGUST

10.00 - 12 noon Family Fun -
bring your family along (adults
must supervise) and try games,
arts and crafts and lots more!

12 - 1.00pm PY Dinners

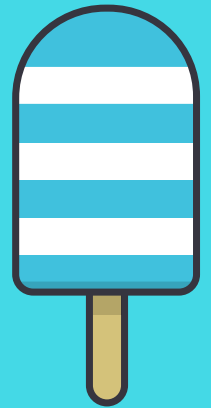
6.00 - 7.30pm S1+ Drop In



THU
10TH AUGUST

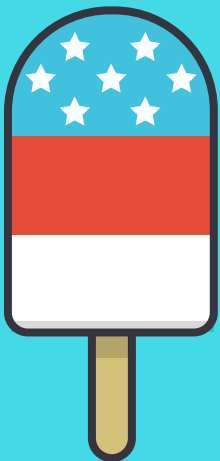
12- 1.00pm PY Dinners

1.00pm - 4.00pm S1+ Trip -
Beach BBQ (15 spaces)



FRI 11TH
AUGUST

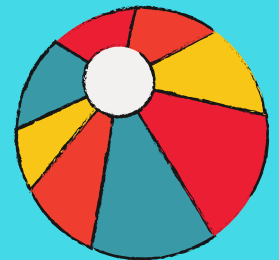
6.30 - 8.30pm Hub S1+



@piltonyouthproj



PYCP/97



- We are providing free, healthy meals Monday to Thursday , just drop in!
- When signing up to trips and activities, please go by the year you have just left with the exception of new P1's as long as they are 5.
- You must have an up to date consent form to take part in ANY activities.
- Places on trips are not guaranteed but we try to be fair when allocating places.
- We will also be running closed groups for our Intensive Support and employability services.